

USBG-COMi-M/USBG-COMi-SI-M USER'S MANUAL

2019 Edition



www.coolgear.com

Contents

INTRODUCTION	2
SPECIFICATIONS & FEATURES	3
USBG-COMi-M	3
USBG-COMi-SI-M	3
HARDWARE INSTALLATION.....	4
RS-232 & RS-422 & RS-485 MODE BLOCK CONFIGURATION.....	5
SW (External DIP Switch) for Mode Setting.....	5
JP1: Termination and Biasing Option Configuration.....	6
JP2: Enabling the +5V 150mA Power for an External Device	7
SERIAL PORT CONNECTOR PINOUT	8
RS-232 Mode Pinout of 9-pin D-sub Connector (CN2)	8
RS-232 Mode Pinout of 9-pin Terminal Block (TB1)	9
RS-422 Mode Pinout	10
RS-485 Full-Duplex Mode Pinout.....	11
RS-485 Half-Duplex Mode Pinout	12
PROPER WIRING FOR RS-422/485 OPERATION	13
RS-422 & RS-485 Transmission Technique	13
RS-422 Signals Connected.....	13
RS-422 & RS-485 4-wire Scheme	14
RS-485 2-wire Scheme	15
INSTALLING WINDOWS DRIVER.....	16
Installing in Windows 10, 8.1, 8, 7, Server 2012 and 2008 R2.....	16
Installing in Windows XP, Vista, Server 2003 and 2008	16
PRE-INSTALLING WINDOWS DRIVER	17
UNINSTALLING WINDOWS DRIVER.....	20
Supported Operating Systems	20
Running the Application	20
Removing a Driver.....	20
Error Messages	22

INTRODUCTION

The USBG-COMi-M/USBG-COMi-SI-M USB-to-Industrial Single RS-232/422/485 Adapter is designed to make industrial communication port expansion quick and simple. Connecting to an USB port on your computer or USB hub, the USBG-COMi-M/USBG-COMi-SI-M instantly adds an industrial communication port to your system. By taking advantage of the USB bus, the USB Industrial I/O Adapter makes it easier than ever to add RS-232, RS-422 or RS-485 device to your system with easy plug-and-play and hot plug features. Adapting the new technology, the industrial I/O communication port expansion now takes the new bus with easy and convenient connectivity.

Plugging the USBG-COMi-M/USBG-COMi-SI-M to USB port, the adapter is automatically detected and installed. There are no IRQ & COM port conflicts, since the port doesn't require any additional IRQ, DMA, memory as resources on the system. The RS-232/422/485 port functions as native Windows COM port, and it is compatible with Windows serial communication applications.

The USB Industrial I/O Adapter provides instant connectivity to RS-232/422/485 communication device for factory automation equipment, multi-drop data collection devices, barcode readers, time clocks, scales, data entry terminals, PC to PC long distance communications and serial communication in harsh environments. The USB Industrial I/O provides industrial solution for applications requiring single node or multi-drop communications over short and long distance.

Optical-isolation and surge protection are available to USBG-COMi-SI-M.

The RS-232/422/485 port is optically isolated with 2000V DC optical isolation. The optical isolation protects your PC or notebook from spikes and surges on the RS-232 port or RS-422/485 network, by converting the electrical pulse into an optical signal and then changing it back into an electrical pulse. Your computer is well protected, since the surges and spikes cannot cross the optical link.

The RS-232/422/485 port is protected by a surge protector to withstand electrostatic discharge and power surges up to 25KV ESD. Surge suppression on all signals prevent damages caused by lightning or high voltages.

SPECIFICATIONS & FEATURES

USBG-COMi-M

- Adds a high speed RS-232/422/485 serial port via USB connection
- 512 byte receive and transmit buffer for high speed data throughput
- Requires no IRQ, DMA, I/O port
- Data rates: 300bps to 1Mbps
- Connector: one DB9 male connector and one 6-pin terminal block connector
- Auto transmit buffer control for 2-wire RS-485 half-duplex operation
- Termination resistors installed on-board
- RS-232 data signals: DCD, RxD, TxD, DTR, GND, DSR, RTS, CTS, RI
- RS-422 data signals: Tx-, Tx+, Rx+, Rx-, GND, RTS-, RTS+, CTS+, CTS-
- RS-485 data signals: Tx-, Tx+, Rx+, Rx- (4-wire), and data-, data+ (2-wire)
- Monitor LEDs of TxD, RxD indicating port status
- Supports power output of DC 5V 150mA, through pin 5 of terminal block connector, for external devices requiring power
- Easy operating mode configuration and setting
- Virtual COM port drivers provided for Windows 10, 8.1, 8, 7, Vista, 2012, 2008, 2003, XP

USBG-COMi-SI-M

- Adds a high speed RS-232/422/485 serial port via USB connection
- 512 byte receive and transmit buffer for high speed data throughput
- Requires no IRQ, DMA, I/O port
- Data rates: 300bps to 1Mbps
- Connector: one DB9 male connector and one 6-pin terminal block connector
- Auto transmit buffer control for 2-wire RS-485 half-duplex operation
- Termination resistors installed on-board
- **RS-232 data signals: RxD, TxD, GND, RTS, CTS**
- RS-422 data signals: Tx-, Tx+, Rx+, Rx-, GND, RTS-, RTS+, CTS+, CTS-
- RS-485 data signals: Tx-, Tx+, Rx+, Rx- (4-wire), and data-, data+ (2-wire).
- Monitor LEDs of TxD, RxD indicating port status
- Supports power output of DC 5V 150mA, through pin 5 of terminal block connector, for external devices requiring power
- Easy operating mode configuration and setting
- Virtual COM port drivers provided for Windows 10, 8.1, 8, 7, Vista, 2012, 2008, 2003, XP
- *The RS-232/422/485 port is optically isolated with 2000V DC optical isolation*
- *The RS-232/422/485 port is protected by surge protector to withstand electrostatic discharge and power surges up to 25KV ESD*

Note: The USBG-COMi-SI-M only supports RxD, TxD, GND, RTS, CTS signals for RS-232 mode.

HARDWARE INSTALLATION

Outside the unit, there is a 4-pin DIP switch used to select the mode of operation. You will need to set the switch settings to RS-232 mode, RS-422 mode, or RS-485 mode, as per the requirements of your application. After setting the switches, plug in the adapter to a USB port to start driver installation. The RS-232 & RS-422 & RS-485 mode block configuration settings are listed as follows.



RS-232 & RS-422 & RS-485 MODE BLOCK CONFIGURATION

SW (External DIP Switch) for Mode Setting

Operation Mode		S1	S2	S3	S4
RS-232	Standard RS-232 Mode	OFF	ON	ON	ON
RS-422	4-wire with Handshaking	ON	ON	ON	ON
RS-485	Full-Duplex (4-wire)	ON	OFF	ON	ON
	Half-Duplex (2-wire) – with Echo	ON	OFF	OFF	ON
	Half-Duplex (2-wire) – without Echo	ON	OFF	OFF	OFF

JP1: Termination and Biasing Option Configuration

Inside the unit, there are 7x2 (JP1) header blocks for jumpers which enable Tx, Rx, CTS 120Ω termination resistors and Rx, Tx 750Ω biasing resistor. You will need to open up the case and set the jumper setting for RS-422 mode, or RS-485 mode, as per the requirements of your application. Settings are listed as follows:

JP1 Jumper		Function
1-2	Close	Tx+/- termination of 120Ω. This jumper should always be populated for RS-485.
3-4	Close	Pull-up Tx+ to VCC by 750Ω bias resistor. This jumper should be populated for pull-up Tx+.
5-6	Close	Pull-down Tx- to GND by 750Ω bias resistor. This jumper should be populated for pull-down Tx-.
7-8	Close	Rx+/- termination of 120Ω. This jumper should always be populated for RS-232/422/485 full-duplex mode.
9-10	Close	Pull-up Rx+ to VCC by 750Ω bias resistor. This jumper should be populated for pull-up Rx+.
11-12	Close	Pull-down Rx- to GND by 750Ω bias resistor. This jumper should be populated for pull-down Rx-.
13-14	Close	CTS termination of 120 Ohm. This jumper should always be populated for RS-422 mode.

Note: Sometimes, when operating in RS-422 or RS-485, it is necessary to configure termination and biasing of the data transmission lines. Generally, this must be done in the cabling, since this depends on the installation of connections. Before applying the option, check your cable specification for proper impedance matching.

Biasing of data lines must only occur at a single point anywhere in the cabling. USBG-COMi-M/USBG-COMi-SI-M provides biasing for ease of installation. If your cabling already provides biasing, please be sure to disable this inside the unit.

Termination must not be installed in the middle of the cable. It is only permitted at both ends. Since a computer controlled serial port is almost always at one end of the cable, termination is disabled by default.

JP2: Enabling the +5V 150mA Power for an External Device

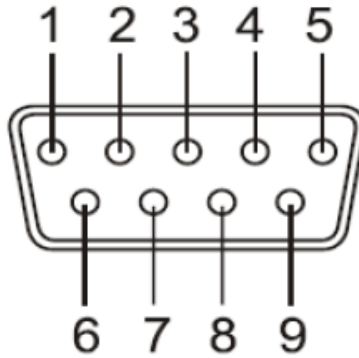
The USBG-COMi-M/USBG-COMi-SI-M provides a unique feature of supplying power output of 5V/150mA through pin 5 of the terminal block connector to serial device requiring power. By default, this feature is disabled; you need to open the metal case and close the jumper (JP2) to enable 5V 150mA power.

JP2 Jumper	Function
Close	Enable the DB9 pin 1 and pin 5 to support a 5V 150mA power for an external device
Open	Disable the 5V 100mA power (default)

SERIAL PORT CONNECTOR PINOUT

RS-232 Mode Pinout of 9-pin D-sub Connector (CN2)

The RS-232 serial ports are configured as data terminal equipment (DTE), with a 9-pin D-sub connector. Pin assignments are according to TIA/EIA-574, which formally defines the assignments for a COM port that are found on many personal computers.



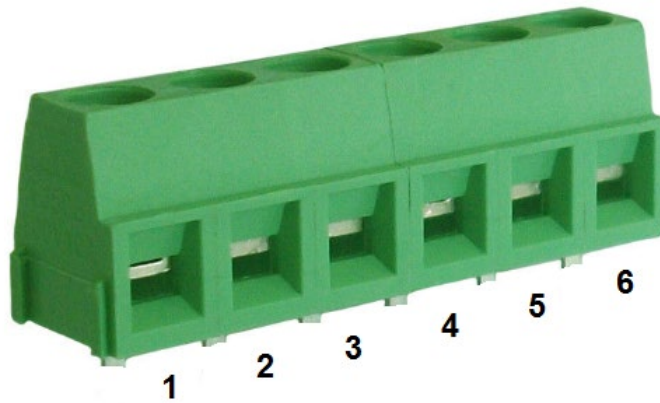
DB9 Male connector pin numbers

Pin Number	Pin Type	Description	
1	Input	DCD	Data Carrier Detect
2	Input	RxD	Receive Data
3	Output	TxD	Transmit Data
4	Output	DTR	Data Terminal Ready
5	Ground	GND	Signal Ground
6	Input	DSR	Data Set Ready
7	Output	RTS	Request to Send
8	Input	CTS	Clear to Send
9	Input	RI	Ring Indicator

RS-232 pinout for DB-9 connector

Note: The USBG-COMi-SI-M only supports RxD, TxD, GND, RTS, CTS for signals for RS-232 mode.

RS-232 Mode Pinout of 9-pin Terminal Block (TB1)



Terminal block connector pin numbers

Pin Number	Pin Type		Description
1	Input	DCD	Data Carrier Detect
2	Input	RxD	Receive Data
3	Output	TxD	Transmit Data
4	Output	DTR	Data Terminal Ready
5	Power	+5V	DC+5V 150mA
6	Ground	GND	Signal Ground

RS-232 pinout for 6-pin terminal block connector

Note: The USBG-COMi-SI-M only supports RxD, TxD, DC+5V, GND signals for RS-232 mode.

RS-422 Mode Pinout

Pin Number	Pin Type		Description
1	Output	TxD-	Transmit Data, negative polarity
2	Output	TxD+	Transmit Data, positive polarity
3	Input	RxD+	Receive Data, positive polarity
4	Input	RxD-	Receive Data, negative polarity
5	Ground	GND	Signal Ground
6	Output	RTS-	Request to Send, negative polarity
7	Output	RTS+	Request to Send, positive polarity
8	Input	CTS+	Clear to Send, positive polarity
9	Input	CTS-	Clear to Send, negative polarity

RS-422 pinout for DB-9 connector

Pin Number	Pin Type		Description
1	Output	TxD-	Transmit Data, negative polarity
2	Output	TxD+	Transmit Data, positive polarity
3	Input	RxD+	Receive Data, positive polarity
4	Input	RxD-	Receive Data, negative polarity
5	Power	+5V	DC+5V 150mA
6	Ground	GND	Signal Ground

RS-422 pinout for 6-pin terminal block connector

RS-485 Full-Duplex Mode Pinout

Pin Number	Pin Type	Description	
1	Output	TxD-	Transmit Data, negative polarity
2	Output	TxD+	Transmit Data, positive polarity
3	Input	RxD+	Receive Data, positive polarity
4	Input	RxD-	Receive Data, negative polarity
5	Ground	GND	Signal Ground

RS-485 full-duplex pinout for DB-9 connector

Pin Number	Pin Type	Description	
1	Output	TxD-	Transmit Data, negative polarity
2	Output	TxD+	Transmit Data, positive polarity
3	Input	RxD+	Receive Data, positive polarity
4	Input	RxD-	Receive Data, negative polarity
5	Power	+5V	DC+5V 150mA
6	Ground	GND	Signal Ground

RS-422 full-duplex pinout for 6-pin terminal block connector

RS-485 Half-Duplex Mode Pinout

Pin Number	Pin Type	Description	
1	Output/Input	Data-	Transmit/Receive Data, negative polarity
2	Output/Input	Data+	Transmit/Receive Data, positive polarity
5	Ground	GND	Signal Ground

RS-485 half-duplex pinout for DB-9 connector

Pin Number	Pin Type	Description	
1	Output/Input	TxD-	Transmit/Receive Data, negative polarity
2	Output/Input	TxD+	Transmit/Receive Data, positive polarity
5	Power	+5V	DC+5V 150mA
6	Ground	GND	Signal Ground

RS-485 half-duplex pinout for 6-pin terminal block connector

PROPER WIRING FOR RS-422/485 OPERATION

This section will provide proper wiring information about RS-422 and RS-485 data communication. It is necessary to have the basic knowledge in order to avoid or find errors in data transmission. Failures in cabling are responsible for the vast majority of transmission problems.

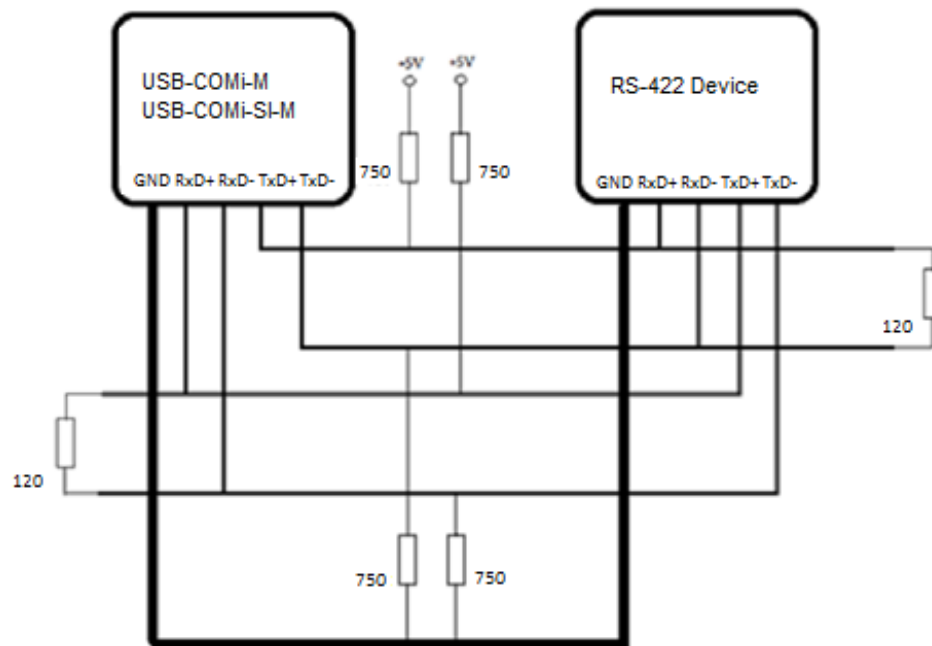
RS-422 & RS-485 Transmission Technique

The RS-422 and RS-485 use the same balanced transmission method. Signals are not transmitted as voltage on a single wire, like in RS-232. Instead, two wires are used; when one carries high voltage, the other one carries low voltage. The signal is defined by the difference in voltage between those two wires. This hardens the transmission against noise. Usually twisted pair cables are used, which further reduces the sensitivity for noise.

To make sure the signals meet the common voltage range, the GND of sender and receiver must be connected somehow. To ensure the signals are in the valid voltage range and the differential voltage can be correctly sensed by the receiver, the GND lines of the transmitter and receiver must be connected.

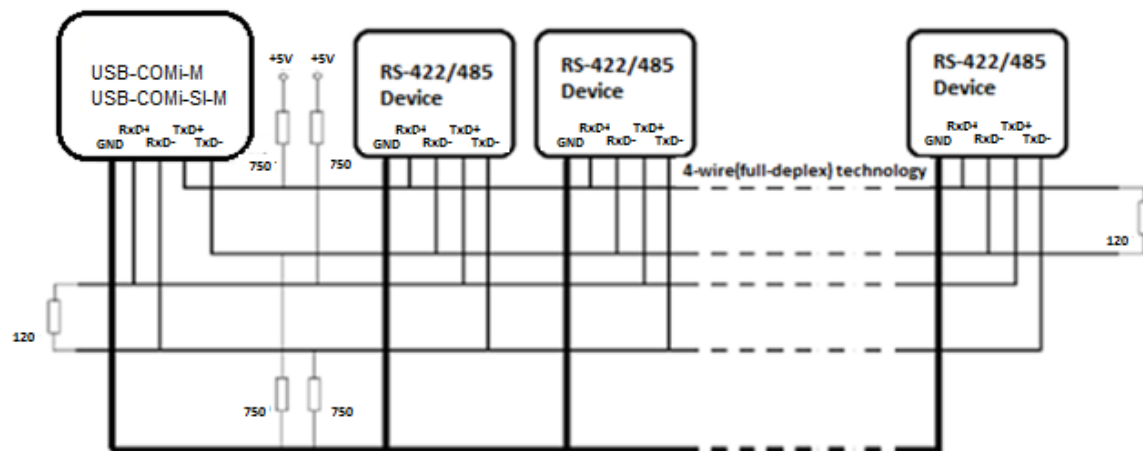
RS-422 Signals Connected

The following diagram shows how RS-422 signals are connected.



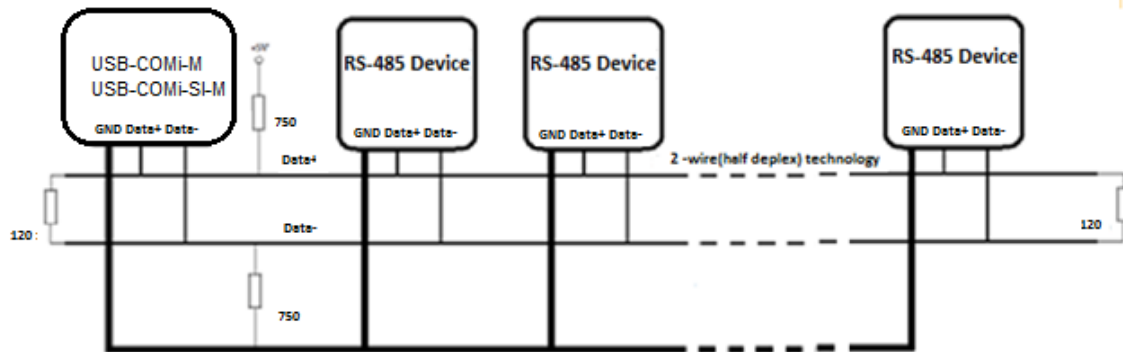
RS-422 & RS-485 4-wire Scheme

The RS-422 requires dedicated wire pairs for transmit and receive. The transmit wires are used to send data to as many as 10 receivers, as stated in the specifications of RS-422. Since the USB-to-Industrial Single RS-232/422/485 Adapter uses the RS-485's line driver technology, up to 32 receivers are possible. The following diagram shows RS-422 and RS-485 4-wire scheme:



RS-485 2-wire Scheme

The following diagram shows RS-485 2-wire scheme:



INSTALLING WINDOWS DRIVER

In most cases, the Windows driver of the USB-to-Industrial Single RS-232/422/485 Adapter will be installed automatically.

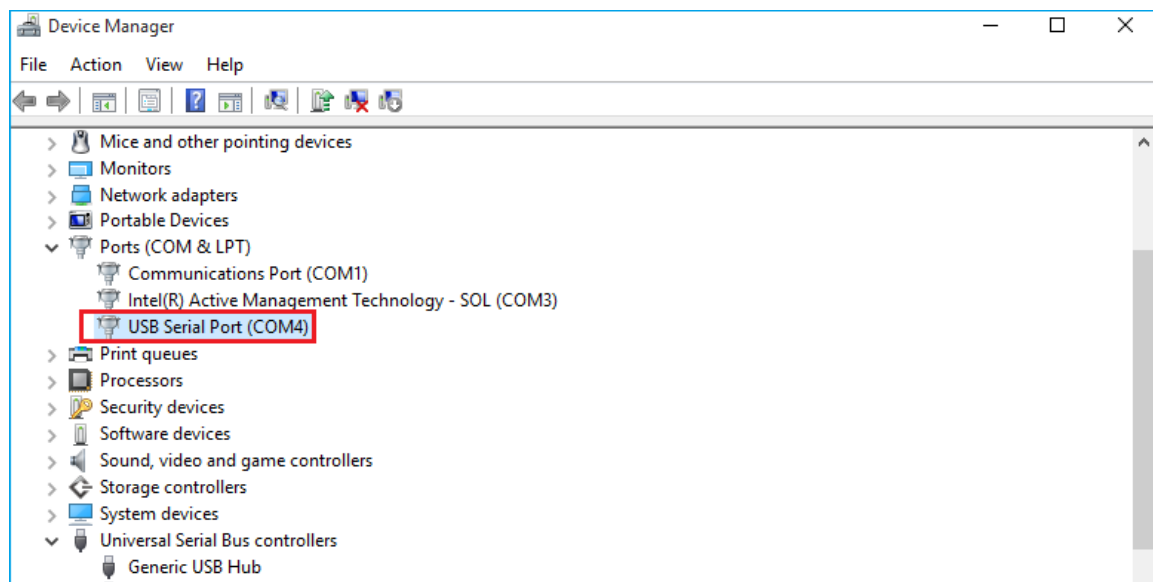
Installing in Windows 10, 8.1, 8, 7, Server 2012 and 2008 R2

Connect your computer to Internet and plug USB-to-Industrial Single RS-232/422/485 Adapter to the USB port. The driver will be installed automatically via Internet.

Installing in Windows XP, Vista, Server 2003 and 2008

Connect your computer to Internet and plug the USB-to-Industrial Single RS-232/422/485 Adapter to the USB port. When asked to install the drivers, allow your computer to search the Internet to load and install the drivers from Windows Update website automatically.

When USB-to-Industrial Single RS-232/422/485 Adapter driver installation is done, you will find “USB Serial Port (COMX)” under “Ports (COM & LPT)” of Device Manager.

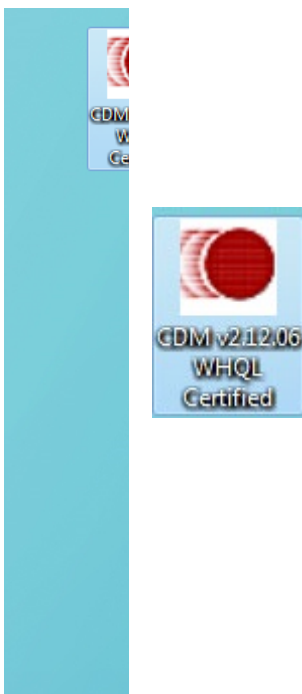


PRE-INSTALLING WINDOWS DRIVER

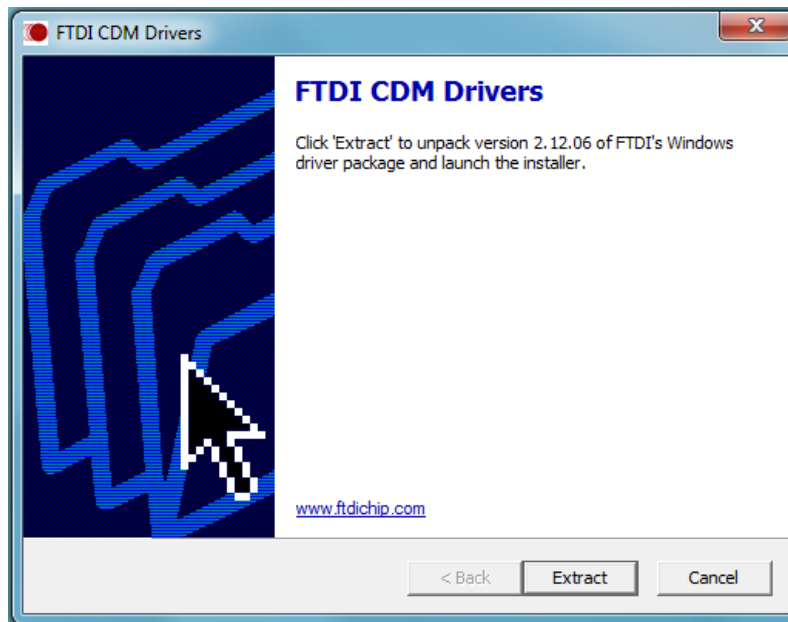
The Windows driver is also available as a setup program (CDMvX.XX.XX WHQL Certified.exe) to pre-install Windows driver into your PC. Run the pre-install setup program before plugging the USB-to-Industrial Single RS-232/422/485 Adapter into the PC. You can download the setup program (CDMvX.XX.XX WHQL Certified.exe) from:

<http://www.ftdichip.com/FTDrivers.htm>

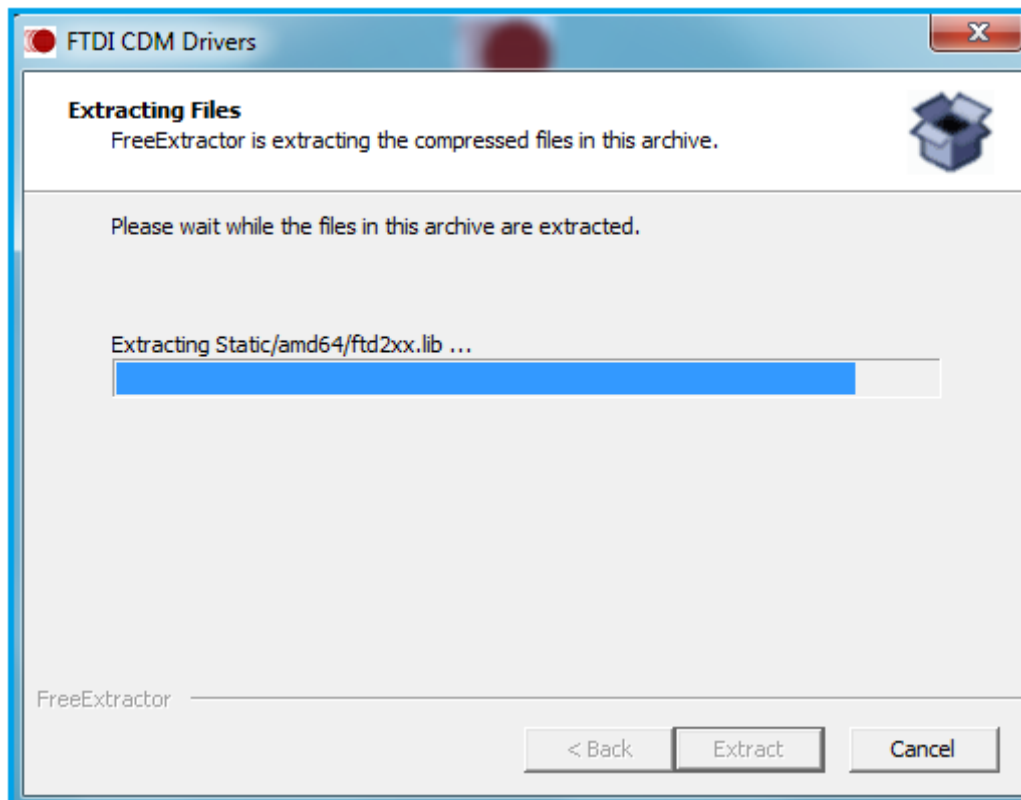
After downloading the driver setup program right click it and select “Run as administrator”



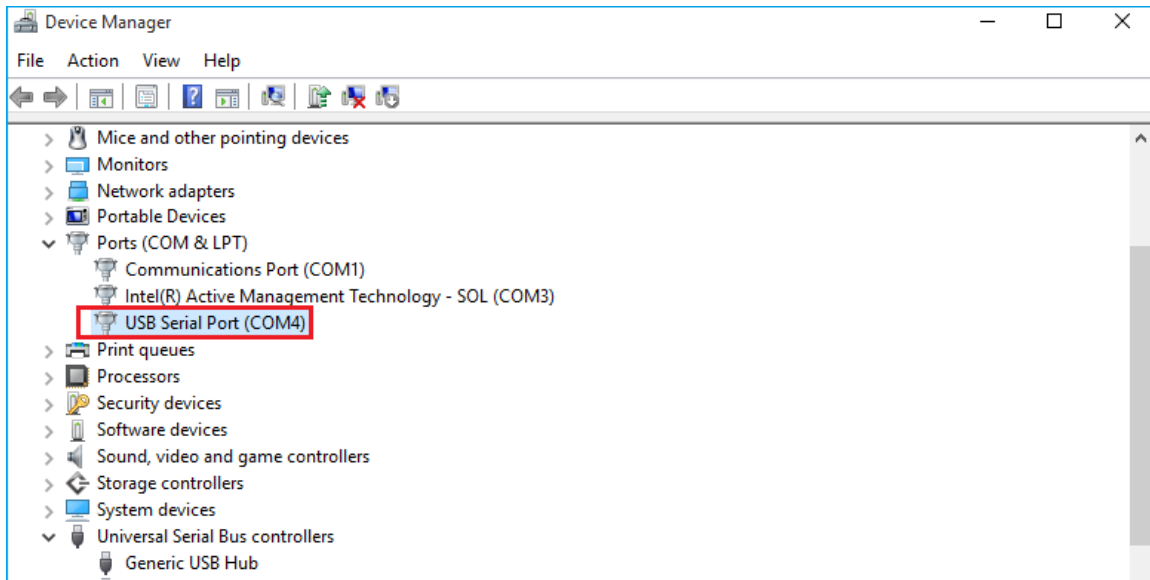
Press the “Extract” button



The driver will now be automatically installed.



Whenever the USB-to-Industrial Single RS-232/422/485 Adapter is plugged into the PC, the Windows driver will be installed and listed in Device Manager.



UNINSTALLING WINDOWS DRIVER

The program CDMuninstallerGUI.exe is used to remove installed drivers from the user's system and clean them from the Windows registry. You can download this program (CDMUninstaller_vX.X.zip) from:

http://www.ftdichip.com/Support/Utilities_hm#CDMUninstaller

Supported Operating Systems

The uninstaller is currently supported on the following operating systems:

- Windows 10/8.1/8/7 (32 and 64-bit)
- Windows Vista (32 and 64-bit)
- Windows XP/2003 (32 and 64-bit)

Running the Application

To run the application, simply double click on the .exe file.

Removing a Driver

The figure below shows the window displayed upon running the application. The vendor ID and product ID text boxes allow the user to enter a 4-character hex value specifying the device that they wish to remove. All installed device drivers can be viewed from within the Windows Device Manager. The USB-to-Industrial Single RS-232/422/485 Adapter uses the FTDI default Vendor ID (0x0403). Depending on the specific model of USBG-COMi-M/USBG-COMi-SI-M, the valid Product IDs may be: 0x6001, 0x6010 or 0x6011...etc.



To remove a device, it must be added into the device window. They must all have a unique vendor ID and product ID combination. To remove the device(s) click on the *'Remove Devices'* button.

The *'Remove'* button will remove the currently selected item from the device window and the *'Clear'* button will remove all the devices from the device window.

A message box will confirm successful removal from the system and the device will be removed from the device window. To create an uninstall log file, check *'Generate uninstall log file'* prior to removing the device. This will create a text file outlining all operations that were attempted during the removal process that will be saved in the same directory as the .exe file.



Error Messages

If there are no devices specified within the device window the following message will appear. Make sure that at least one device has been specified within the window by using the *'Add'* button.



If the application is unable to find any devices matching the vendor ID and product ID when removing a device, the following message box will appear. In this situation make sure that the details that you have entered are indeed correct by checking with the windows device manager.



The Vendor ID and Product ID must be a unique combination, if an attempt is made to add the same device twice the following message box will appear.

